



Center for Hospice Care's Camp Evergreen  
has helped grieving children for over 25 years.

4 Organizations  
**1 Mission**  
Improving the Quality of Living



**Annual Report 2018**



## To St. Joseph, Marshall, Elkhart, LaPorte, Fulton, Starke, Kosciusko, LaGrange and Porter County Communities:

Center for Hospice Care achieved several milestones in 2018. For the fifth consecutive year, the total number of patients cared for was over 2,000. By annualized numbers of patients served, CHC continues to rank in the top 3% of all hospice programs in America. And we have again expanded our service area. A new LaPorte office location opened in early 2018 bringing to four the number of care offices that serve as operational bases for our clinical homecare staff. To generate continued growth, we added Porter County to our service area bringing to nine the number of northern Indiana counties served by CHC. The only Medicare certified hospice inpatient units in the region, CHC's Elkhart and South Bend facilities, served over 600 patients for the third consecutive year.

It was a spectacular year for many of our signature special events. With more than 400 registered guests the 2018 Helping Hands Award Dinner, honoring Sister Carmel Marie Sallows, CSC for her lifetime of service, was held on Wednesday, May 2nd. Later that month, we held a reception for our first Vera Z. Dwyer Fellow in Hospice and Palliative Medicine. The event was an opportunity to publicly thank the Vera Z. Dwyer Charitable Trust for their \$500,000 gift to fund the first five years of the Fellowship as well as to announce the trust's \$1 million challenge grant to establish a permanent endowment for this Fellowship seat at the Indiana University School of Medicine. We were pleased to celebrate other events including the 25th anniversary of Camp Evergreen on August 9th and the tenth anniversary of the Elkhart Campus on August 16th. During this event we rededicated the inpatient facility as "Esther's House" in honor of Dick Strefling's mother. Dick and Rita Strefling made a substantial gift toward the Elkhart Campus capital campaign a decade ago. For local hospice fundraisers desiring a physically active experience, the annual Bike and Walk events were held concurrently at our Mishawaka Campus on September 23rd. More than 500 riders, walkers, staff and volunteers participated. Our annual Veterans Tribute Ceremony took place at our Mishawaka Campus Veterans Memorial on October 16th where we also rededicated the memorial as the "Captain Robert J. Hiler Jr. Veterans Memorial," thanks to a generous gift from Catherine and Jack Hiler

and the Hiler Family Foundation. Additionally, as a four-star "We Honor Veterans" (WHV) program member, we gave over 100 certificates to veterans in our service area on or close to Veteran's Day 2018. What a pleasure it is to thank them for their service. WHV is a collaborative program between the Veteran's Administration and the National Hospice and Palliative Care Organization in Alexandria, VA.

On June 12th, we held our official groundbreaking ceremony for the Ernestine M. Raclin House, the new state-of-art 12-bed hospice inpatient facility being built on our Mishawaka Campus and overlooking the St. Joseph River. The facility is named in honor of a generous donor, Ernie Raclin, who made a transformative gift.

Our five-year comprehensive campaign, "Cornerstones for Living: The Crossroads Campaign," ended 2018 at \$11,580,844, eclipsing the \$10 million campaign goal, with six months to go. Overall cash gifts received by the Hospice Foundation in 2018 totaled \$1,637,550. Thanks to the generosity of a very giving community, we were able to continue our 38-year promise of never turning anyone away due to an inability to pay. In fact, during 2018 the value of charity care, write-offs, adjustments, etc. added up to \$2,051,544. Over the last four years charity and other free programming has totaled \$8.4 million in CHC care and services.

Part of that care includes bereavement services. Of the total bereaved clients served last year, 20% were from the community with no prior experience with CHC or other clients from throughout our service area. Of the total individual/family counseling sessions, 66% were with community clients. Individual and group counseling continues to be available to anyone dealing with the loss of a loved one anywhere in our service area at no charge. There were nearly 4,000 individual and group counseling sessions provided during 2018.

To encourage the importance of advance care planning, Honoring Choices Indiana – North Central found a new home within our Hospice Foundation. We also continue to be privileged to operate Milton Adult Day Services and the international hospice and palliative care partnership program, Global Partners in Care

(GPIC). GPIC has partnered 42 U.S. hospice and palliative care programs with similar programs in developing countries, primarily in sub-Saharan Africa.

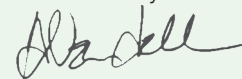
We are joined in our work by a team of dedicated volunteers. During 2018, CHC hospice program volunteers worked 15,667 hours, the equivalent to over 7.5 FTEs who never call in sick or take vacations. In addition, they drove 49,760 miles. That's more than 20% of the distance from the earth to the moon. Adding the last five years' mileage together, our volunteers would have driven to the moon. These volunteers provided a dollar savings to CHC during 2018 totaling \$407,225. Medicare requires our volunteers' work to be calculated and reported each year.

Overall, 2018 was another wonderful year for Center for Hospice Care, Hospice Foundation, Milton Adult Day Services and Global Partners in Care. We appreciate whatever role you played in making it all possible. Our goal each day is a simple one: To Improve the Quality of Living, whether it's in northern Indiana or across the globe in developing countries. Everything we do all comes down to a single best day of caring at the patient bedside. Thank you for your ongoing interest and support.

Gratefully,



Mark M Murray  
President / CEO  
Center for Hospice Care/Hospice Foundation/  
Milton Adult Day Services/Global Partners in Care



Wendell Walsh  
2018 Volunteer Board Chair  
Center for Hospice Care



Amy Kuhar Mauro  
2018 Volunteer Board Chair  
Hospice Foundation/Global Partners in Care

## About Us

### Our Mission

To improve the quality of living

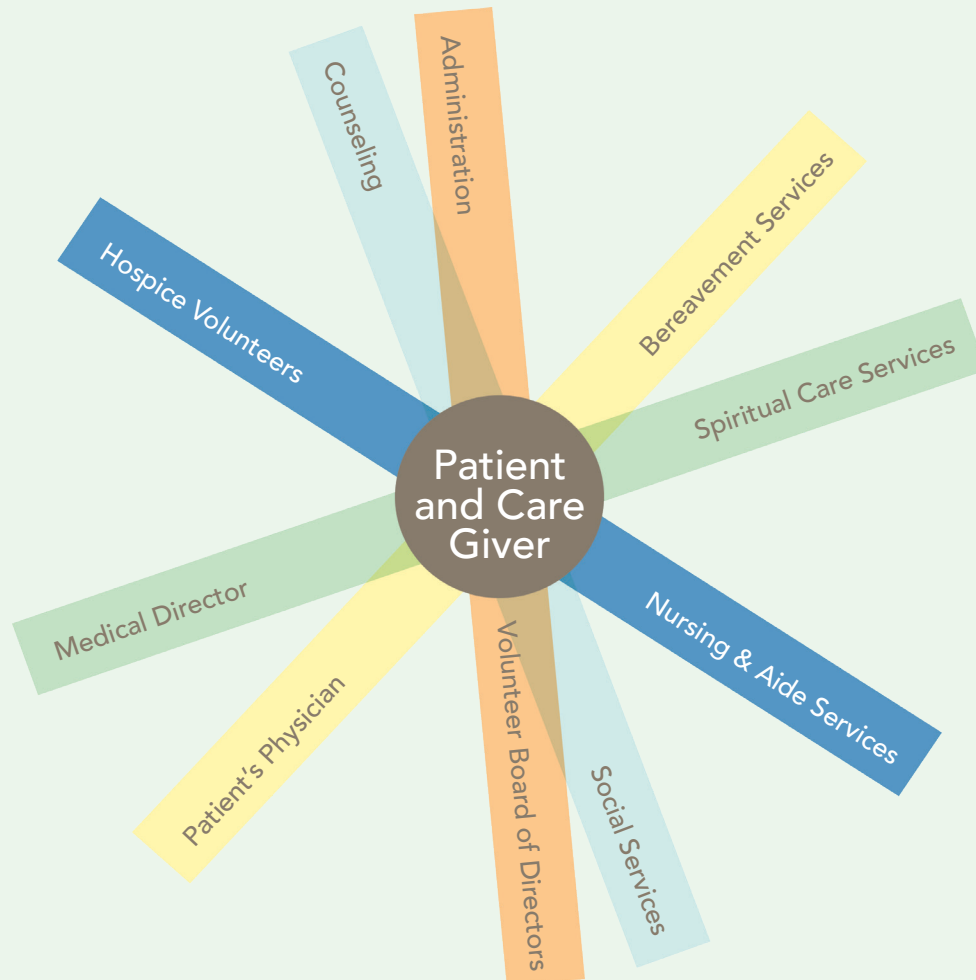
### Our Core Values

Compassion, Dignity, Innovation, Integrity,  
Quality, Service, Stewardship

### Our Vision

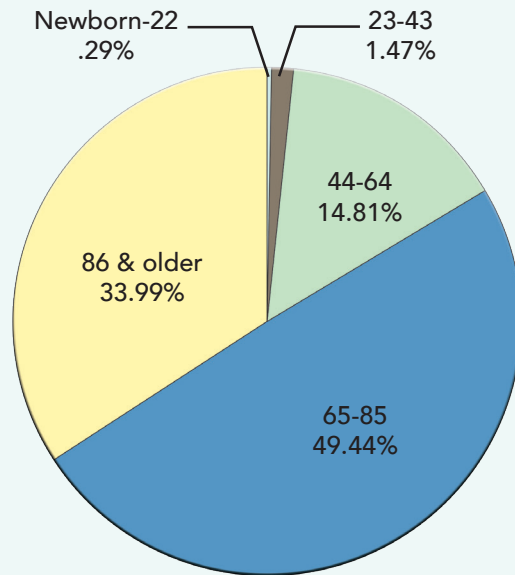
To be the premiere hospice and palliative care  
organization for all end-of-life issues

### Our Team

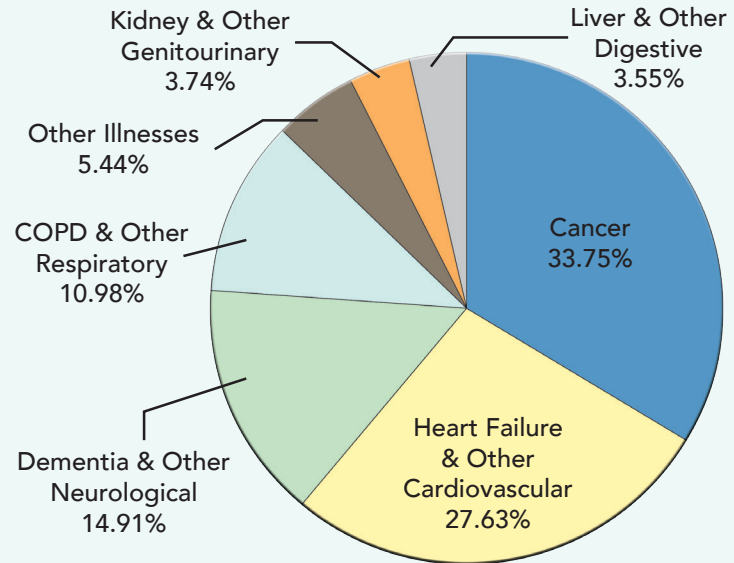


# Summary for 2018

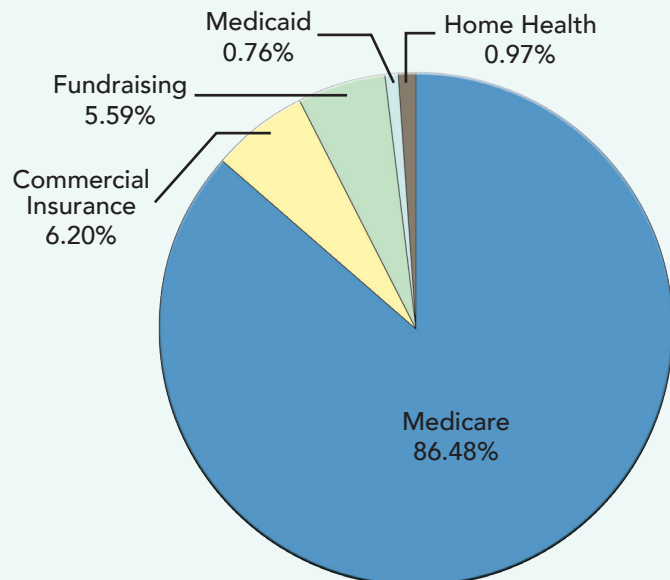
Hospice / Home Health  
Patients by Age



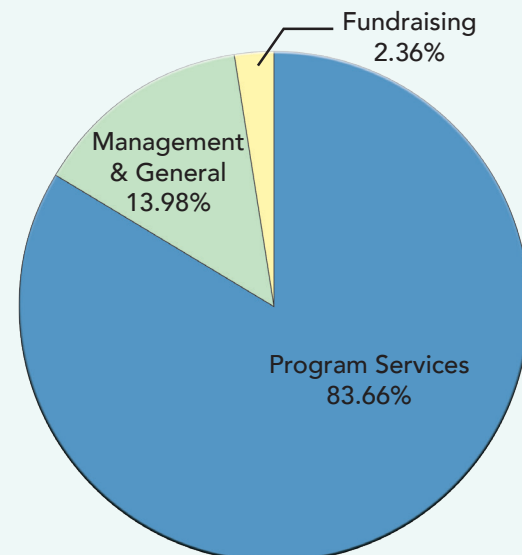
Hospice / Home Health  
Patients by Diagnosis



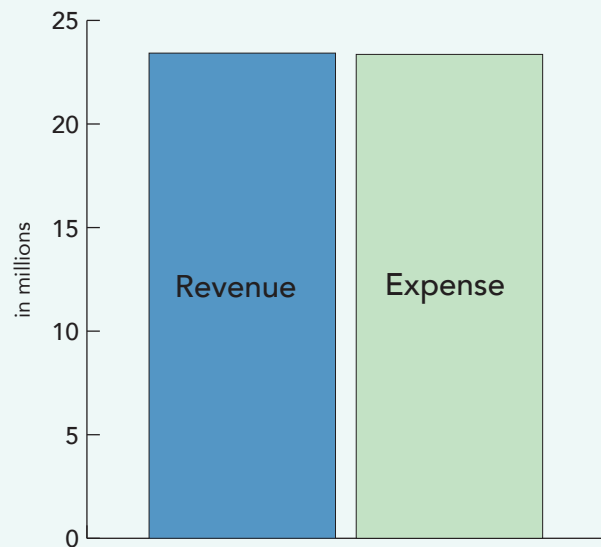
Total Revenue by Type



Total Expenses by Type



### Total Revenue vs. Total Expenses



The graph to the left represents the combined revenue and expenses for Center for Hospice Care, Hospice Foundation, and Global Partners in Care. It includes investment decreases for the foundation during 2018. It should be noted that the combined 2018 operational revenue outpaced operational expenses and the combined entities showed a positive net gain from operations alone.

### Results of 2018's Independent Audit

In accordance with good fiduciary practices, CHC, the Hospice Foundation, and Global Partners in Care engaged Kruggel, Lawton & Company LLC to perform the 2018 audit for the purpose of forming an opinion on the consolidated financial statements taken as a whole. The 2018 Independent Auditor's Report states, "In our opinion the consolidated financial statements referred to above present fairly, in all material respects, the financial position of The Center for Hospice and Palliative Care, Inc. and Affiliates as of December 31, 2018, and the changes in their net assets and their cash flows for the year then ended in accordance with principles generally accepted in the United States of America."



**KRUGGEL  
LAWTON<sup>CPA</sup>**

## 2018 CHC/HF Board of Directors

### CHAIR

Wendell Walsh\*

### VICE CHAIR

Mary Newbold\*

### SECRETARY

Carol Walker, MSN, RNC-NIC\*

### TREASURER

Jesse Hsieh, MD\*

### IMMEDIATE PAST CHAIR

Amy Kuhar Mauro\*

Jennifer Ewing, RN, MSN, NP-C, AOCNP; Ann M. Firth; Jennifer Houin;  
Patricia Luck; Anna Milligan; Tim Portolese; Suzanne Weirick

Corey Cressy\*

### HOSPICE FOUNDATION IMMEDIATE PAST CHAIR

*\* Denotes Board Members who also serve on the Hospice Foundation  
and Global Partners in Care Boards*

## 2018 Agency Leadership

### ADMINISTRATIVE TEAM

Mark M Murray, President/CEO

David A. Haley, Vice President/COO

Mike Wargo, Vice President/COO, Hospice Foundation

Karl Holderman, Vice President/CFO

Sue Morgan, RN, BS, MS, Director of Nursing

Craig Harrell, Director of Marketing and Access

### MEDICAL TEAM

Gregory C. Gifford, MD, JD, ABEM: Board Certified in Emergency Medicine/  
Hospice and Palliative Medicine, Medical Director/Chief Medical Officer

Jon B. Kubley, MD, ABFM: Board Certified in Family Medicine/  
Hospice and Palliative Medicine, Medical Director

Joel Cohen, MD, ABR: Board Certified in Radiation Oncology, Medical Director

Cathie Bennett, DNP, ACHPN, FNP-BC, Nurse Practitioner

Katherine M. Eash, RN, NP-C, Nurse Practitioner

Gayle Waldenmaier, ACNP-BC, ACHPN, Nurse Practitioner

## 2018 Donors Who Gave \$1,000 or More

1st Source Foundation

Suzann M. and David W. Abbott

Accretive Services, LLC

Alick's Home Medical

Anonymous (5)

Jacqueline and Peter Ashley

Laverne M. Auger

Billie L. and David L. Bankoff

Julie and Charles Barany

Barnes & Thornburg LLP

Nancy A. Barrett

Chris Batalis

Beacon Health System

Kathleen Beeler and  
Brian C. Regan

Donna and Brad C. Beutter

Francie and Denny Beville

Pamela and Jeffery Bickel

Michele and Joseph Bleich

Andrea S. Bolan

Elisabeth M. Bolduc

Janette Burkhart-Miller

Carleton, Inc.

Carol J. Case

Estate of Richard E. Clark

Robert R. Cleppe

Sandra E. Clingenpeel

Club 15

John M. Collins

Tina and Terry Corley

Corson Family Foundation

The Cressy Foundation

Elizabeth and Corey Cressy

James Davis

Arthur J. Decio

Dec-O-Art, Inc.

Bill Deputy Foundation

Donato DelPrete

DJ Construction Co.

Linda S. and Bipin N. Doshi

Mary and Dean Douwsma

DSM Intentional Eucharistic  
Community

Dunlap Lions Club

Vera Z. Dwyer Charitable Trust

Dynamic Mechanical Services, Inc.

Sharon and Matthew Edmonds

Michelle and Alan Engel M.D.

Sondra and Howard R. Engel M.D.

Marcia and Matthew Eppers

Holly and Nick Farmer

FDC Graphic Films Inc.

Ann M. and John C. Firth

Susan and Thomas Fischbach M.D.

## 2018 Donors Who Gave \$1,000 or More (cont.)

Foegley Landscape Inc.	Stephen C. Johnson	Michiana Hematology-Oncology, PC	Shamrock Development Inc.
John Foegley	Connie V. and Michael A. Joines	Midland Engineering Company	Debbie and Randy Sheneman
Trevor Foley	Jones Petrie Rafinski	Anna and Samuel L. Milligan M.D.	Nancy K. Shephard
Forest River Inc.	Renee and Robert Jones	Edward V. and Margaret A. Minczeski Fund	Linda and Ralph C. Shive
The Foundation of Saint Joseph Health System	James A. Kazmierczak	Carol Moore	Robert J. Shriner Jr.
Frank Family Fund	Keen Family Charitable Fund	Suzanne M. Morgan	Estate of Virginia G. Sikorski
Phyllis Fuchs	Richard J. Keen Jr.	Mary and D. Kelly Moyer	Sisters of St Francis
Sandra and John Gavin	Joyce Caroline Kevorkian	Sarah and Anthony Mudd	South Bend Cubs
Lisa and Douglas Gaeddert	Patricia and Robert Kill	Rebecca and Bob Mueller	South Bend Sod Busters Inc.
Gates Automotive, Inc.	Estate of Bettie L. Kimmel	Kristine and Lawrence Mueller	Roberta and Tom Spencer
Gates Fund	Kinnucan Family Charitable Fund	Mark M Murray	St. Joe Valley Street Rods
Greg Gifford	Koontz Lake Association, Inc.	Network for Good	Mary Jane Stanley
Give with Liberty	Don and Jurate Krabill Family NE Fund	Mary J. and Philip A. Newbold	Estate of Kay Joice Stemen
Tami L. Greenawalt	Andrew J. and Florence A. Krizman Endowment Fund	Delores K. Newcomer	Pamela K. Stephenson
Sharon Kay Gregory	Jon and Mary Kubley	Carolyn and R. Allen Nolte	Strefling Foundation Inc.
Gurley-Leep Automotive Family	Amy and David Mauro	Joy O'Grady	Studebaker National Museum, Inc.
Walter H. Halloran, MD	Laura M. Lord	Oliver Ford Lincoln Mercury	Carol and David Swanstrom
James L. Hanson	Patricia and Daniel Luck	Cynthia and Michael Orr	Tracy and Chris Taelman
Janet and Dennis Hartman	Karon and Allan Ludwig	Lisa and Michael Ottow	Richard W. Tarara
Ralph M. and Lucille M. Hass Fund	Kellie Ann Lyons	Jean E. Perrin	Nancy L. Taylor
Phyllis Hause	Colette and Matt Magor	Carolyn J. Peterson	Teachers Credit Union
Charles Hayes	Jessica and Paul Maich	John G. Pfeil	The Tire Rack
Helman Sechrist Architecture	Kathryn Majewski	Estate of Martha M. Pickrell	Trek Bicycle Granger
Catherine and John Hiler	Evelyne Major Fund	Thomas S. Piekarski	Richard W. Trenkner Fund
Karen S. Hiler	Sara and Christian Marbach	Laura Pitrak	Julie and Jeev Trika
Robert J. Hiler Family Foundation	Christine and Erwin Marohn	The Porile Family Charitable Fund	Truist
Lisa and Karl Holderman	Martell Electric, LLC	Debra and Michael Powell	Rizan and Ashfaq Turk
Holy Cross College	May Oberfell Lorber	Quality Dining, Inc.	United Way of Elkhart County, Inc.
Estate of Jacqueline Dawn Homman	Anita and Scott McAfoos	The Radiology Inc. Foundation	University of Notre Dame
The Horton Family Fund	James W. McCann	Barbara Resnik	Nancy and Wendell Walsh
Karen A. Hudson	Patsy D. McCrindle	Paul & Jeannie Rogalski	Dena and Michael Wargo
Indiana Trust Wealth Management	Estate of James E. McCrum	Craig W. Rogers	Carol L. Weber
INSERV, Inc.	Robert A. Mead	Saint Joseph High School	Wellfield Botanic Gardens
Kurt Janowsky	William E. Mellish	Schmuhl Family Fund	Leslie Weston
Janine and Paul Janssen	Memorial Hospital	Schurz Communications Foundation, Inc.	Barbara L. Williams M.D.
Arnold W. Joers	Mennonite Mutual Aid	Stacy Scott-Shelton	X-Ray Consultants, Inc.
Minge and Scott Johnson	Montel L. Menting	Cyndy and Steve Searfoss	Marisa and Timothy Yoder



111 Sunnybrook Court  
South Bend, IN 46637

22579 Old US 20 East  
Elkhart, IN 46516

112 South Center Street  
Plymouth, IN 46563

286 West Johnson Road, Suite B  
La Porte, IN 46350

**Administration, Hospice Foundation,  
Life Transition Center & Global Partners in Care**

501 Comfort Place  
Mishawaka, IN 46545

**Milton Adult Day Services**

922 East Colfax Avenue  
South Bend, IN 46617

*Serving Elkhart, Fulton, Kosciusko, LaGrange, LaPorte, Marshall, Porter,  
St. Joseph and Starke Counties in northern Indiana*

**4 Organizations**  
**1 Mission**  
Improving the Quality of Living



CFHCare.org  
FoundationForHospice.org

MiltonADS.org  
GlobalPartnersInCare.org